

WASHI (RICE PAPER) TAPE



Product Features

Premium Grade Rice Paper Coated with Acrylic Emulsion or Solvent Acrylic Adhesive

Application

Commonly used as masking material for auto component and interior during spraying or painting

Product Sizes

Jumbo Roll Size :830mm x 2000m
Paper Core Size :76mm

* Contact sales representative for available sizes

Colours



Gold

Technical Data

Product	Max. Temp Resistance for 30min	Backing	Adhesive	Total Thickness	Initial Tack	Peel Adhesion	Tensile Strength	Elongation % at break
				(um)	(#)	(N/in)	(N/in)	
WT95	60°C / 140°F	Rice Paper	Acrylic Emulsion	95-105	8†	3-4	65†	6%
WT110	150°C / 302°F	Rice Paper	Solvent Acrylic	100-110	8†	2-4	65†	6%

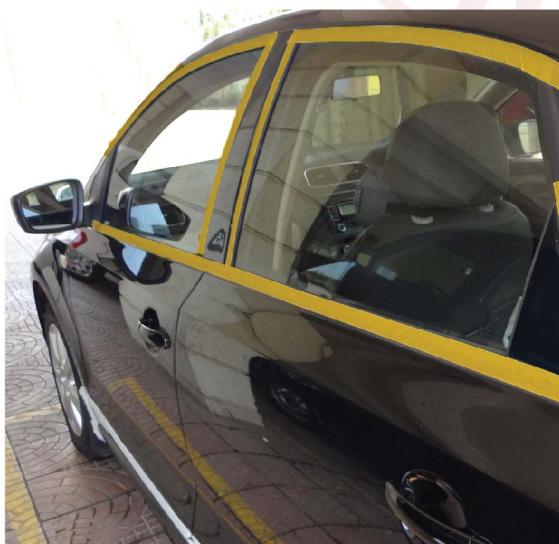
Product Characteristics

- Removed cleanly without causing surface damage and easily remove from previously painted surfaces, including painted wall board
- Hand tearable & repositionable
- Ideal for repaint applications, it conforms well to most surfaces and produces an excellent tape line
- Quick stick, good adhesion, short term
- Good chemical resistance, UV resistant, good moisture resistance
- Good balance of strength, flexibility, durability, and removability
- Resists lifting and curling
- Economically priced

Shelf Life

12 Months Storage at 23°C and 65% Relative Humidity

Disclaimer : While we believe them to be reliable, the statements and information herein are only for general guidance and are not warrants or guarantees for accuracy and completeness. The user must, by test or otherwise, determine suitability for this purpose.



GTG MANUFACTURING SDN. BHD. (968289-M)

Website: www.gtgroup.com.my

Tel: +603-8725 9988 | Fax: +603-8725 9989 | Email: info@gtgroup.com.my

